

Complex karyotype and novel agents

Panagiotis Baliakas, MD-PhD

Dept of Immunology, Genetics and Pathology
Science for Life Laboratory, Uppsala University
Clinical Genetics, University Hospital, Uppsala

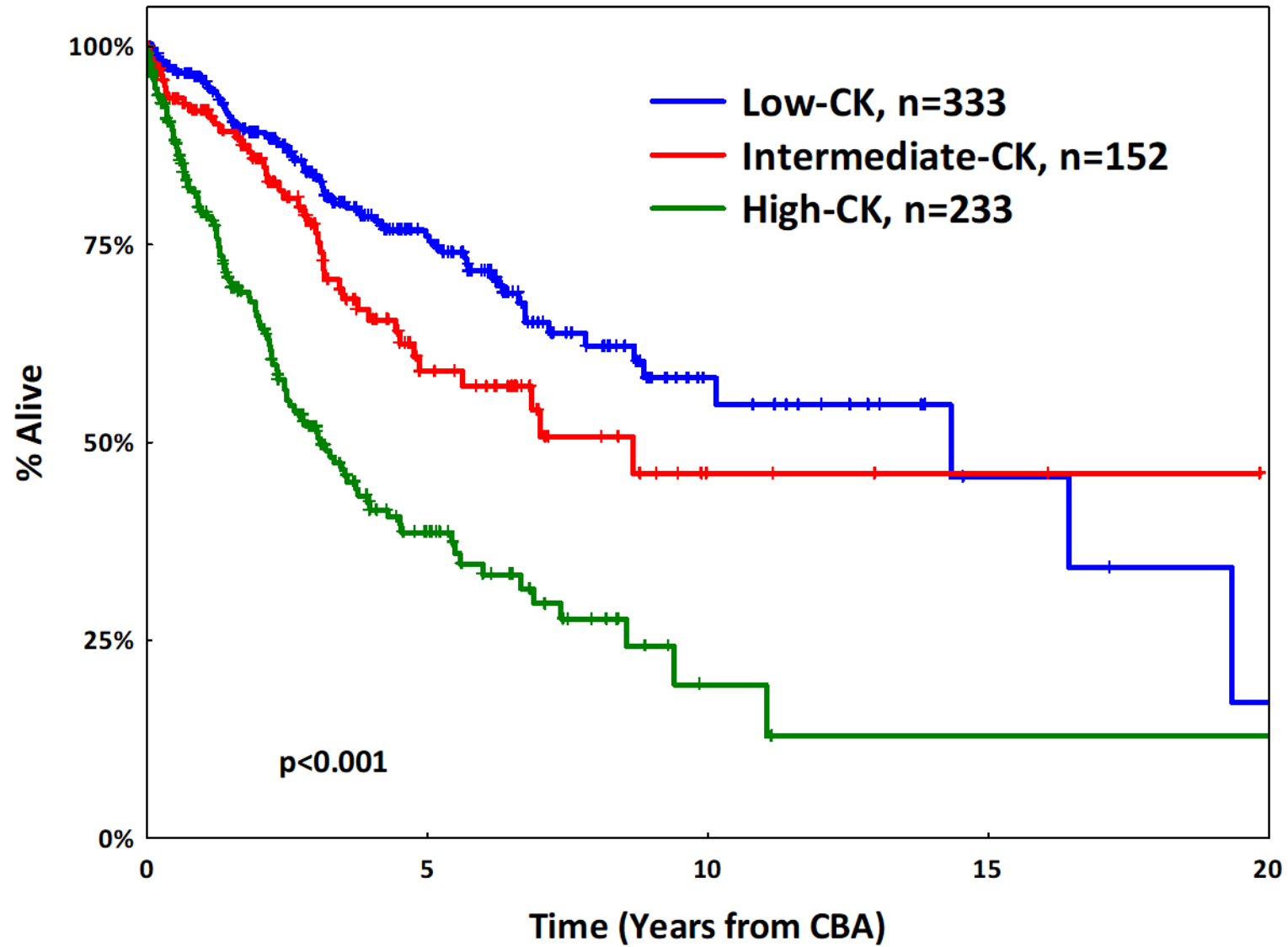


UPPSALA
UNIVERSITET

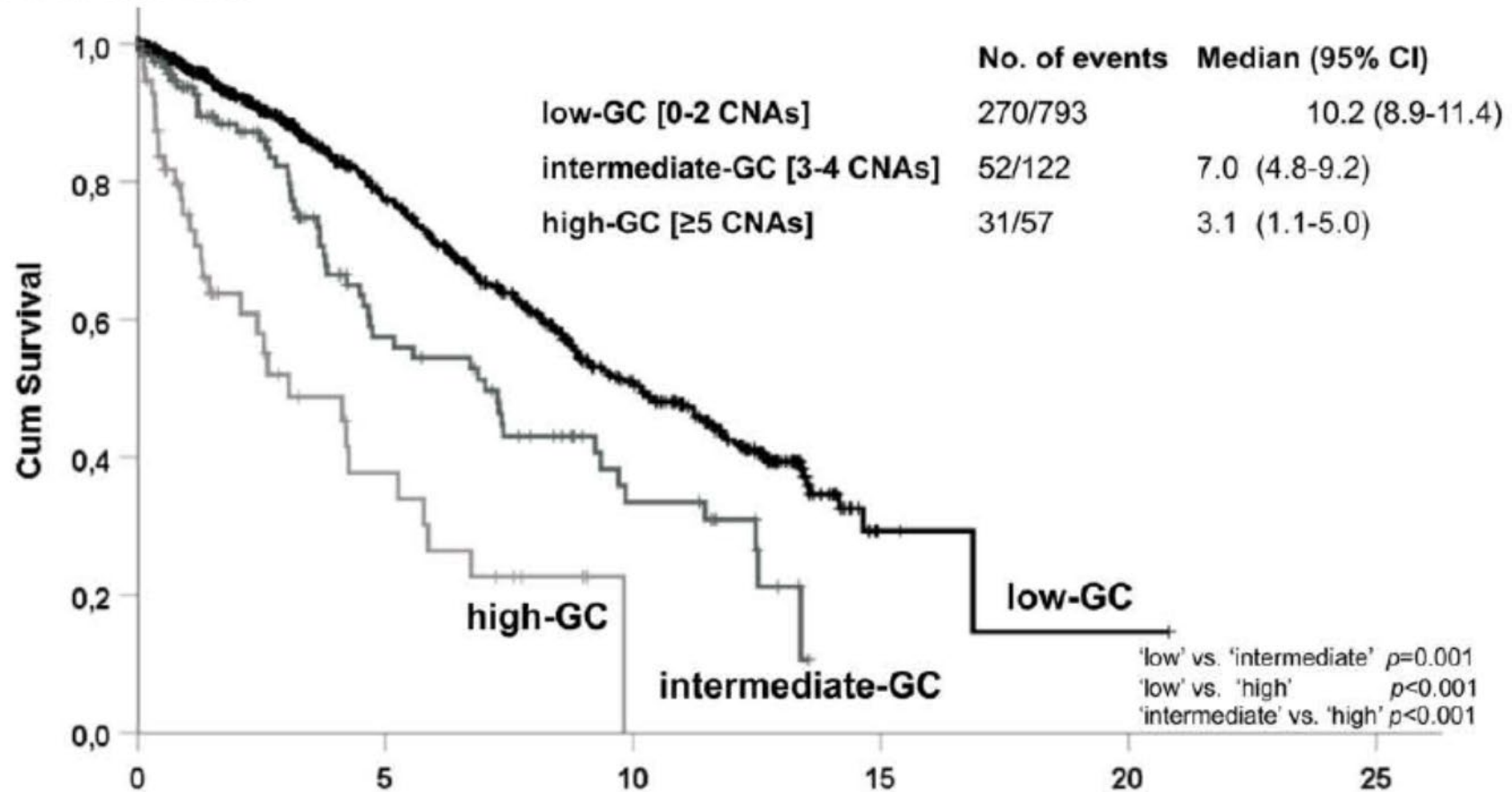
SciLifeLab



AKADEMISKA
SJUKHUSET



A Overall survival



No. at Risk

	0	5	10	15	20	25
low-GC	793	353	160	3	1	0
intermediate-GC	122	38	14	0	0	0
high-GC	57	10	0	0	0	0

Aim of the project

To evaluate the predictive role of genomic complexity defined by microarray analysis among CLL patients treated with novel agents (NA, ibrutinib, idelalisib, venetoclax)

Training Cohort

- 200 pts with CLL treated with novel agents* and detailed clinical follow-up as well as available DNA at the time before the initiation of treatment

Validation cohort

- pts with CLL treated with novel agents and detailed clinical follow-up already evaluated with arrays at the time before the initiation of treatment with NA

*: 100 ibrutinib, 50 idelalisib, 50 venetoclax

** : ibrutinib:idelalisib:venetoclax: 2:1:1

Inclusion criteria

Training Cohort

- Detailed clinical follow-up
- 2 µg DNA
- Pts with known IGHV and recurrent mutational status (*TP53*, *SF3B1*, *NOTCH1*) as well as CBA will be preferred.

Validation cohort

- Detailed clinical follow/up
- known IGHV and recurrent mutational status (*TP53*, *SF3B1*, *NOTCH1*)
- Pts with CBA will be preferred

Inclusion criteria

Training Cohort

- Micro-arrays will be performed at clinical genetics Uppsala University hospital, Sweden
- If not available, IGHV and recurrent mutational status analysis will be performed at Institute of Applied Biosciences, Thessaloniki, Greece

Validation cohort

- Detailed clinical follow/up
- known IGHV and recurrent mutational status (*TP53*, *SF3B1*, *NOTCH1*)
- Pts with CBA will be preferred

Coordinating sites

- Institute of Applied Biosciences, Centre for Research and Technology Hellas and Hematology Department, G. Papanikolaou Hospital, Thessaloniki, Greece
- Department of Immunology, Genetics and Pathology, Uppsala University, Sweden
- Munich Leukemia Laboratory, Munich, Germany

Other main sites

- Department of Hematology, Academic Medical Center Amsterdam, University of Amsterdam, Netherlands
- Laboratori de Citogenètica Molecular, Servei de Patologia, Hospital del Mar, Barcelona, Spain
- Central European Institute of Technology, Masaryk University and University Hospital Brno, Czech Republic
- Department of Haematology, Royal Bournemouth Hospital, Bournemouth, United Kingdom