

# 46<sup>th</sup> General Assembly of ERIC Members

Tuesday 12<sup>th</sup> February 2019, Mannheim, Germany

# ERIC Information

- **Non-profit organization** according to German law  
Klinik I für Innere Medizin, Universitätsklinikum Köln  
Kerpener Straße 62, 50937, Köln
- Established on 31<sup>st</sup> January 2006
- Executive office:  
Hematology Department, Hospital Sant Pau,  
Mas Casanovas 90, 08041, **Barcelona**, Spain
- **PIC** Number: 930535939

WP7 - European Leukemia Net



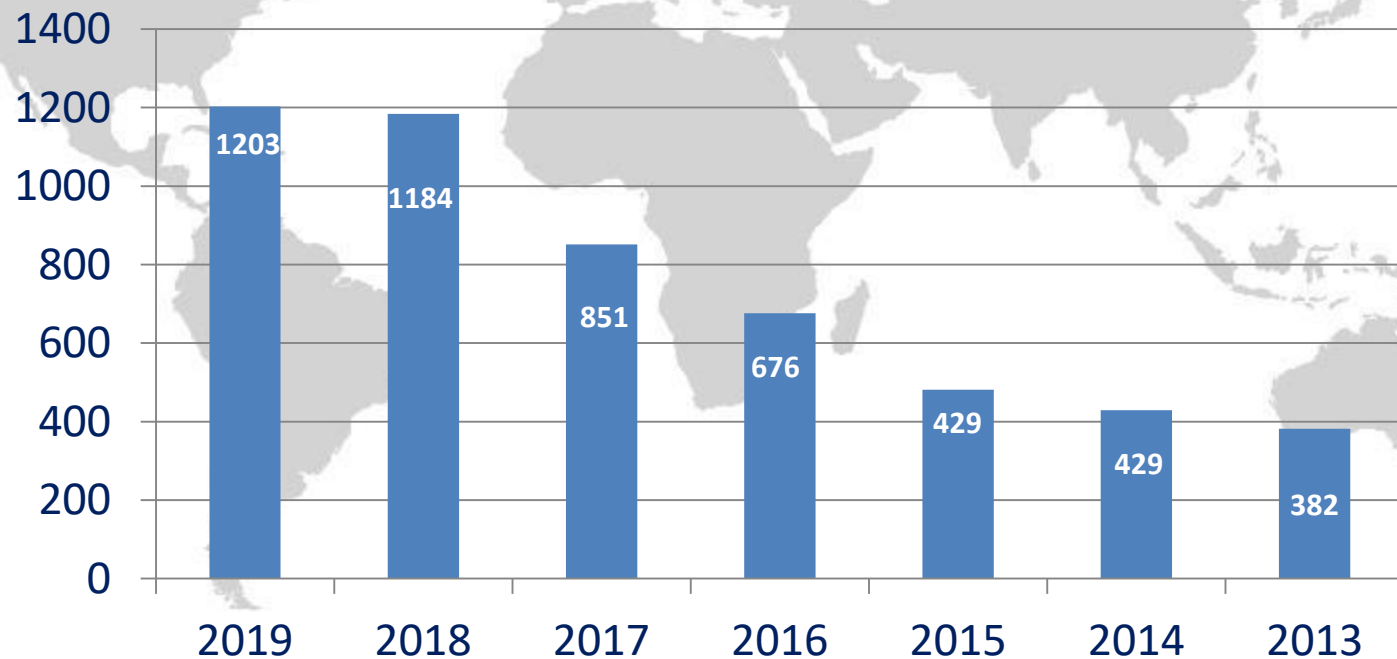
Scientific WG - EHA



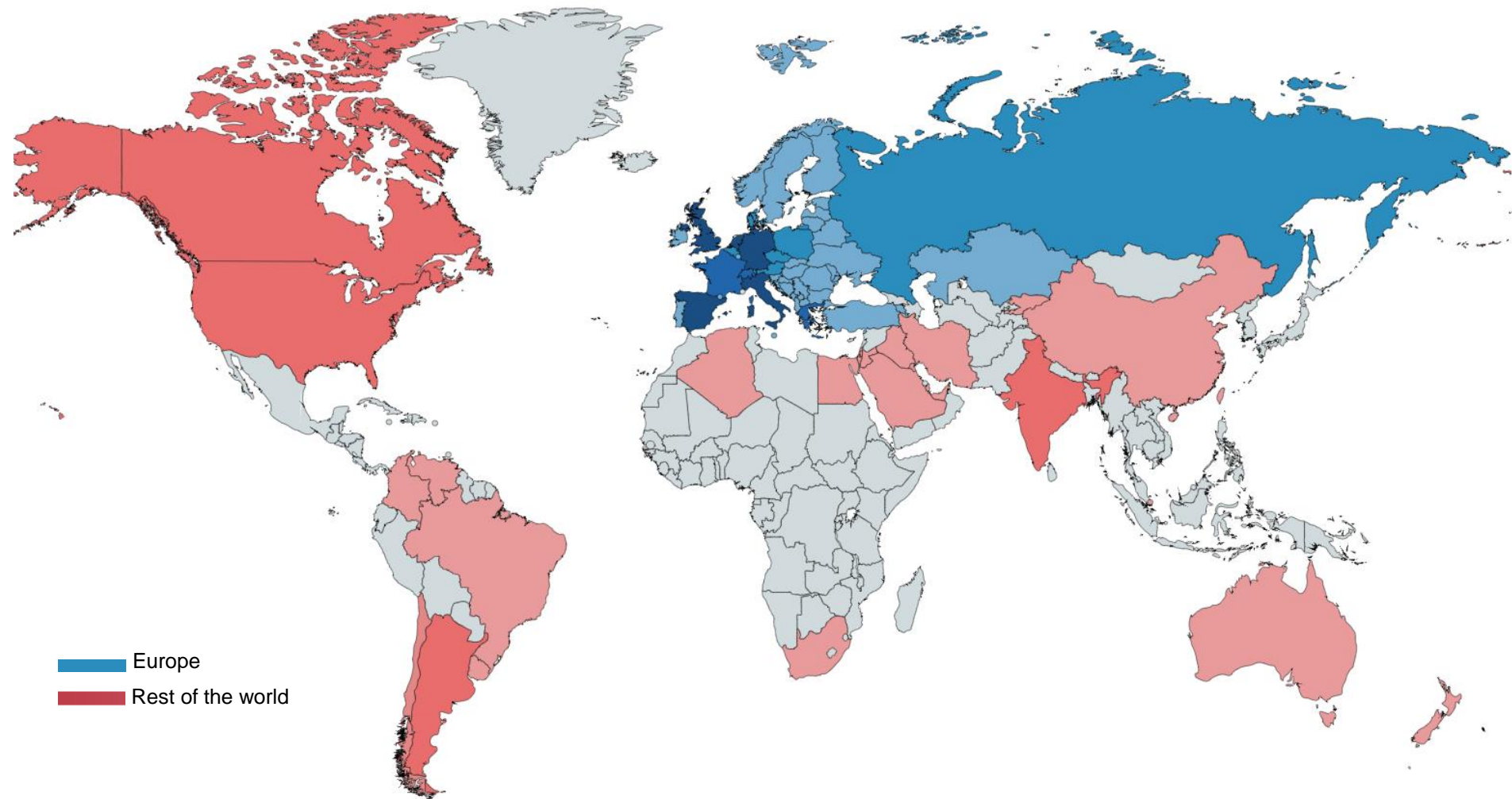
# ERIC Membership

- **1203 Members**
- **Distributed amongst 75 countries / 571 different institutions**

**Number of ERIC members (per year)**



# ERIC Membership



# ERIC International Meeting 2018

- **TOTAL 365 ATTENDEES**

❖ Delegates	210
❖ Students/Trainees	47
❖ Pharma/Industry	53
❖ Faculty	42

- **FROM 32 COUNTRIES**

- Argentina
- Australia
- Austria
- Belgium
- Canada
- Colombia
- Czech Republic
- Denmark
- Estonia
- France
- Germany
- Greece
- Hong Kong
- Hungary
- Israel
- Italy
- Latvia
- Lithuania
- Netherlands
- Norway
- Poland
- Portugal
- Romania
- Russia
- Serbia
- Spain
- Sweden
- Switzerland
- Turkey
- Ukraine
- United Kingdom
- United States





# TP53 Network

- ERIC promotes and supports, through education, the:
  - Importance of testing **for TP53 aberrations all cases needing therapy, before first and later lines of treatment**
  - Adoption of appropriate diagnostic techniques to ensure reliable and comparable results  
→ **Certification of laboratories**
- The countries in green have at least 1 certified centre
- Besides Europe, ERIC also has certified centres in Australia, Brazil



129  
Certified  
Centres from  
27 countries



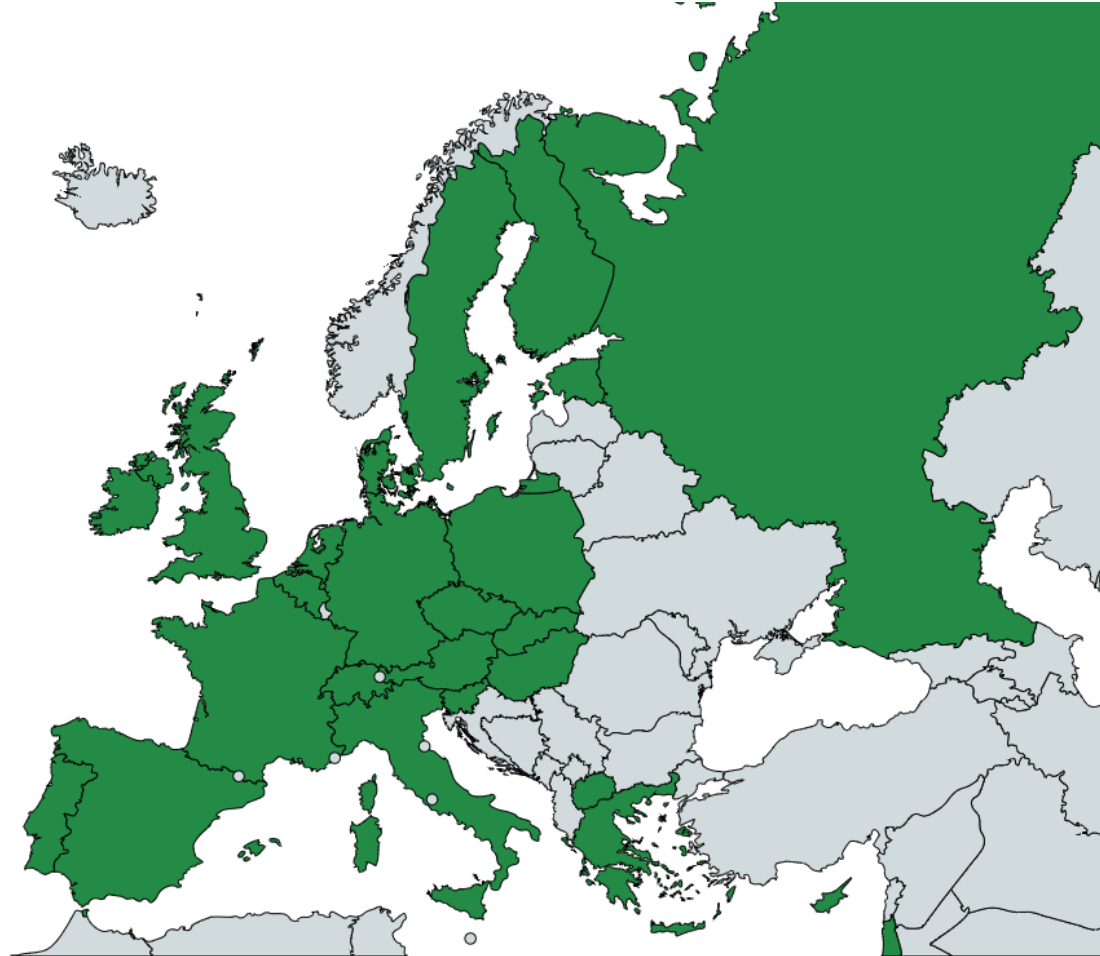
11  
Reference  
Centres



3  
Certifying  
Centres



7  
TP53 Certification  
Rounds completed



# IGHV Network

- ERIC promotes and supports, through education, the:
  - Importance of **immunogenetic analysis** across the medical community before using CIT
  - Adoption of appropriate diagnostic techniques to ensure reliable and comparable results  
→ **Certification of laboratories**
- The countries in blue have at least 1 certified centre
- Besides Europe, ERIC also has certified centres in Argentina, Australia, Taiwan and USA



92  
Certified  
Centres from  
30 countries



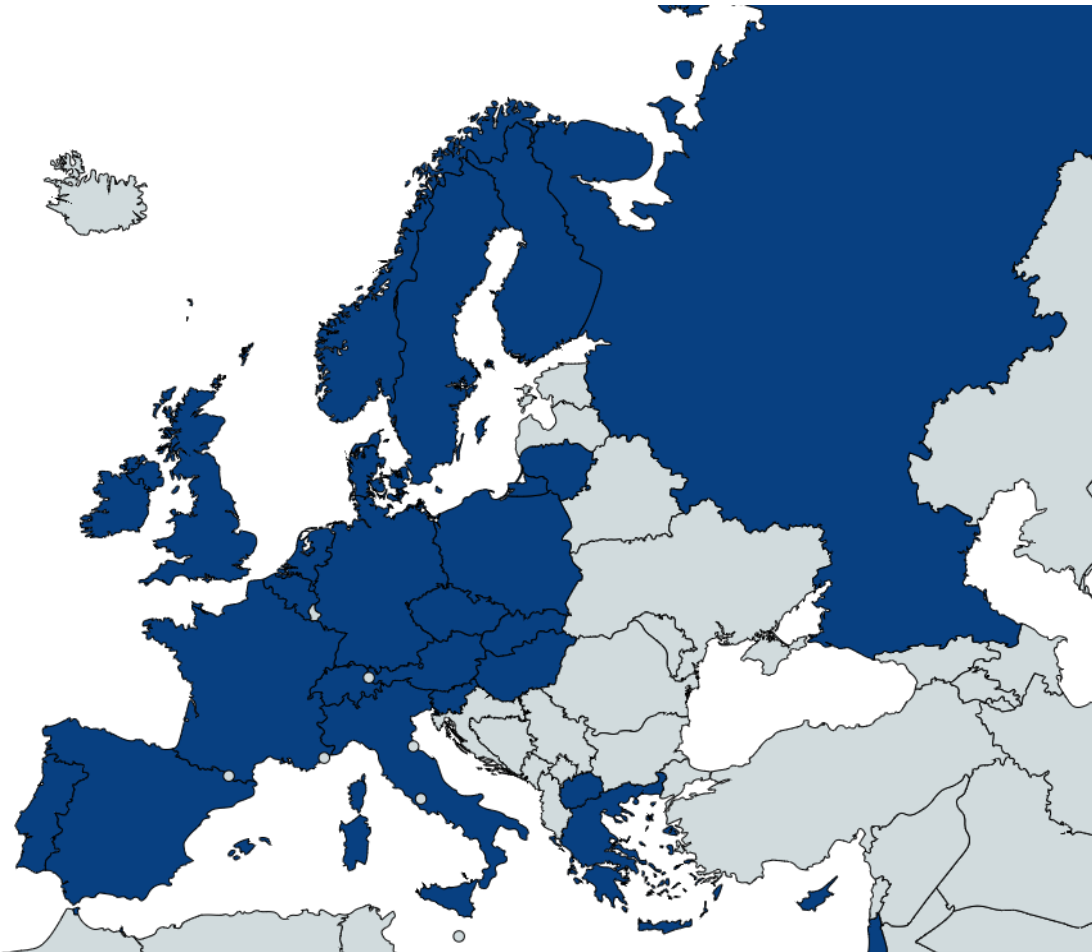
7  
Reference  
Centres



2  
Certifying  
Centres



4  
IGHV Certification  
Rounds completed



# 2018 ERIC Workshops

## **ERIC WORKSHOP ON IGHV ANALYSIS IN CLL**

- 04 JULY 2018 (TEL-AVIV, ISRAEL)

## **INTERNATIONAL WORKSHOP BIOMARKERS IN CLL: THE ART OF SYNTHESIS**

- 16-17 MARCH 2018 (BELGRADE, SERBIA)

## **INTERNATIONAL WORKSHOP BIOMARKER-GUIDED MANAGEMENT OF CLL**

- 13 APRIL 2018 (MOSCOW, RUSSIA)

## **ERIC INTERNATIONAL MEETING**

- 25-27 October 2018 (Barcelona, Spain)





**ERIC WORKSHOP ON MRD ANALYSIS IN  
CHRONIC LYMPHOCYTIC LEUKEMIA**

Theoretical and practical aspects of Minimal residual Diseases analysis in CLL  
with special emphasis on data interpretation and reporting

**15-16 March, 2019**  
**Hotel La Palma, Stresa, Italy**



**WORKSHOP ON  
IMMUNOGLOBULIN GENE  
IN CLL**

**28-29 March, 2019**  
**Bethesda, Maryland**



# 2018 ERIC Publications

## **CYTOGENETIC COMPLEXITY IN CHRONIC LYMPHOCYTIC LEUKEMIA: DEFINITIONS, ASSOCIATIONS AND CLINICAL IMPACT**

P. Baliakas, S. Jeromin, M. Iskas, A. Puiggros, K. Plevova, F: NguyenKhac, Z. Davis, G.M. Rigolin, A. Visentin, A. Xochelli, J. Delgado, F. Baran-Marszak, E. Stalika, P. Abrisqueta, K. Durechova, G. Papaioannou, V. Eclache, M. Dimou, T. Iliakis, R. Collado, M. Doubek, M .J. Calasanz, N. Ruiz-Xiville, C. Moreno, M. Jarosova, A.C. Leeksma, P. Panayiotidis, H. Podgornik, F. Cymbalista, A. Anagnostopoulos, L. Trentin, N. Stavroyianni, F. Davi, P. Ghia, A. P. Kater, A. Cuneo, S. Pospisilova, B. Espinet, A. Athanasiadou, D. Oscier, C. Haferlach and K. Stamatopoulos

*Blood Journal (2018 December)*

## **IMMUNOGLOBULIN GENE SEQUENCE ANALYSIS IN CHRONIC LYMPHOCYTIC LEUKEMIA: FROM PATIENT MATERIAL TO SEQUENCE INTERPRETATION**

A .Agathangelidis, L.A. Sutton, A. Hadzidimitriou, C. Tresoldi, A.W. Langerak, C. Belessi, F: Davi, R. Rosenquist, K. Stamatopoulos, P. Ghia

*Journal of Visualized Experiments, JoVE (2018 November 26)*

## **EFFICACY OF BENDAMUSTINE AND RITUXIMAB AS FIRST SALVAGE TREATMENT IN CHRONIC LYMPHOCYTIC LEUKEMIA AND INDIRECT COMPARISON WITH IBRUTINIB: A GIMEMA, ERIC AND UNK CLL FORMU STUDY**

Cuneo A, Follows G, Rigolin G M, Piciocchi A, Tedeschi A, Trentin L, Medina Perez A, Coscia M, Laurenti L, Musuraca G, Farina L, Rivas Delgado A, Orlandi E A, Galieni P, Romana Mauro F, Visco C, Amendola A, Billio A, Marasca R, Chiarenza A, Meneghini V, Ilariucci F, Marchetti M, Molica S, Re F, Gaidano G, Gonzalez M, Forconi F, Ciolli S, Cortelezzi A, Montillo M, Smolej L, Schuh A, A Eyre T, Kennedy B, Bowles K M, Vignetti M, de la Serna J, Moreno C, Foà R, Ghia P

*Haematologica 2018 April 19*

## **ERIC RECOMMENDATIONS FOR TP53 MUTATION ANALYSIS IN CHRONIC LYMPHOCYTIC LEUKEMIA - UPDATE ON METHODOLOGICAL APPROACHES AND RESULTS INTERPRETATION**

Malcikova J, Tausch E, Rossi D, Sutton LA, Soussi T, Zenz T, Kater A, Utoft Niemann C, Gonzalez D, Davi F, Gonzalez Diaz M, Moreno C, Gaidano G, Stamatopoulos K, Rosenquist R, Stilgenbauer S, Ghia P, Pospisilova S & on behalf of the European Research Initiative on Chronic Lymphocytic Leukemia (ERIC) – TP53 network

*Leukemia (2018) doi:10.1038/s41375-017-0007-7*

## **REPRODUCIBLE DIAGNOSIS OF CHRONIC LYMPHOCYTIC LEUKEMIA BY FLOW CYTOMETRY: AN EUROPEAN RESEARCH INITIATIVE ON CLL (ERIC) & EUROPEAN SOCIETY FOR CLINICAL CELL ANALYSIS (ESCCA) HARMONISATION PROJECT**

Rawstron AC, Kreuzer K-A, Soosapilla A, Spacek M, Stehlikova O, Gambell P, Mclver-Brown N, Villamor N, Psarra K, Arroz M, Milani R, de la Serna J, Cedena MT, Jaksic O, Nomdedeu J, Moreno C, Rigolin GM, Cuneo A, Johansen P, Johnsen HE, Rosenquist R, Utoft Niemann C, Kern W, Westerman D, Trneny M, Mulligan S, Doubek M, Pospisilova S, Hillmen P, Oscier D, Hallek M, Ghia P, and Montserrat E.

*Cytometry Part B 2018; 94B: 121–128.*

# 46th General Assembly of ERIC Members

## Agenda

- 09:45 - 10:00**    **Welcome and Introduction – Paolo Ghia**
- 10:00 - 11:10**    **Updates on ongoing projects**
- 10:00 - 10:10    Use of BR in treatment naïve patient with CLL outside clinical trials - *A. Cuneo*
- 10:10 - 10:20    Immunogenetics and stereotypy project – *A. Agathangelidis*
- 10:20 - 10:30    Prevalence of BTK and PLCγ2 Mutations in Patients relapsing under Ibrutinib - *L. Scarfò*
- 10:30 - 10:40    Update on the Gene Mutation Project Update - *L.A. Sutton*
- 10:40 - 10:50    ERIC study on prognostic and predictive impact of minor TP53 variants – update - *S. Pospisilova*
- 10:50 – 11:00    ERIC TP53 Certification - Results of Round 7 - *S. Pavlova*
- 11:00 – 11:10    ERIC IG Certification - Results of Round 4 – *A. Agathangelidis*
- 11:10 - 11:15**    **Final remarks – Paolo Ghia**

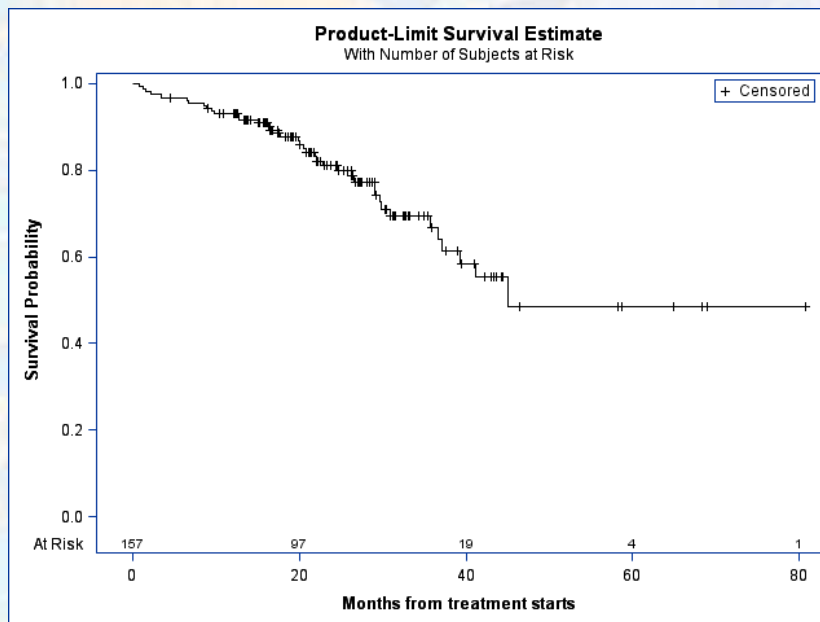
# **Efficacy and safety of BR outside clinical trials in previously untreated older patients with CLL: an indirect comparison with ibrutinib**

- 1. Efficacy and safety of BR in previously untreated CLL (GIMEMA and ERIC centres)**
- 2. Comparison with ibrutinib in patients with CLL treated in the front-line setting at 20 community and academic cancer centers in the U.S.**



# Efficacy and safety of BR outside clinical trials in previously untreated older patients with CLL: an indirect comparison with ibrutinib

1. Efficacy and safety of BR in previously untreated CLL (GIMEMA and ERIC centres)
2. Comparison with ibrutinib in patients with CLL treated in the front-line setting at 20 community and academic cancer centers in the U.S.



**Primary endpoint: PFS**

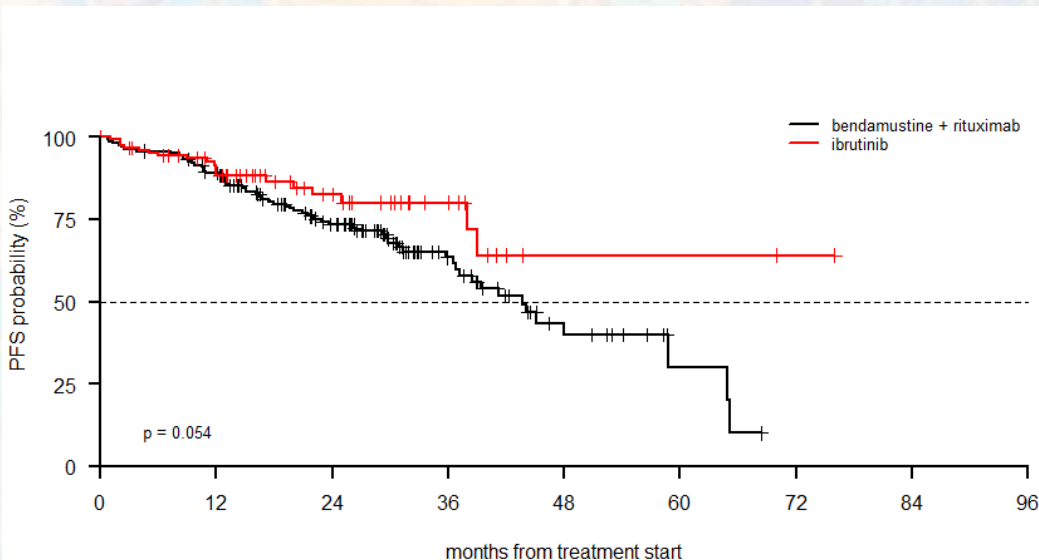
157 unfit patients

Median follow-up 26.25 months  
(range: 0.79-80.76)

Months	Estimate	Lower 95% CI	Upper 95% CI
12	93.0	89.0	97.1
24	81.0	74.5	88.2
36	66.8	57.1	78.1

# Efficacy and safety of BR outside clinical trials in previously untreated older patients with CLL: an indirect comparison with ibrutinib

1. Efficacy and safety of BR in previously untreated CLL (GIMEMA and ERIC centres)
2. Comparison with ibrutinib in patients with CLL treated in the front-line setting at 20 community and academic cancer centers in the U.S.



Median follow-up Ibrutinib cohort (165 Pts) (CI-95%): **13 months** (10.74;14) IQR (time): (8;24) (162 Pts)  
Median follow-up BR cohort (CI-95%): **29 months** (26.48;31.02) IQR (time): (21.41;41.88)

	months	estimate	lower 95%CI	Upper 95%CI
BR	12	89	84.3	93.9
BR	24	73.5	66.7	81
BR	36	63.4	54.9	73.1
BR	48	39.8	28.3	56
ibrutinib	12	88.2	82.5	94.4
ibrutinib	24	82.5	74.6	91.4
ibrutinib	36	80.1	71.3	90.1
ibrutinib	48	64.1	46	89.3

**LAST CALL**

**Obinutuzumab + Chlorambucil as front-line treatment in CLL**

**OBJECTIVE: to describe the effectiveness, and safety of obinutuzumab monotherapy and obinutuzumab + chlorambucil in patients with CLL**

# 46th General Assembly of ERIC Members

## Agenda

- 09:45 - 10:00**    **Welcome and Introduction – Paolo Ghia**
- 10:00 - 11:10**    **Updates on ongoing projects**
- 10:00 - 10:10    Minimal Residual Disease Testing in CLL - *A. Rawstron*
- 10:10 - 10:20    Immunogenetics and stereotypy project – *A. Agathangelidis*
- 10:20 - 10:30    Prevalence of BTK and PLCγ2 Mutations in Patients relapsing under Ibrutinib - *L. Scarfò*
- 10:30 - 10:40    Update on the Gene Mutation Project - *L.A. Sutton*
- 10:40 - 10:50    ERIC study on prognostic and predictive impact of minor TP53 variants – update - *S. Pospisilova*
- 10:50 – 11:00    ERIC TP53 Certification - Results of Round 7 - *S. Pavlova*
- 11:00 – 11:10    ERIC IG Certification - Results of Round 4 – *A. Agathangelidis*
- 11:10 - 11:15**    **Final remarks – Paolo Ghia**



**THANK YOU VERY MUCH  
FOR YOUR ATTENTION**

**[www.ericll.org](http://www.ericll.org)**

